



SAGE ACCPAC

System and User Administration Modules

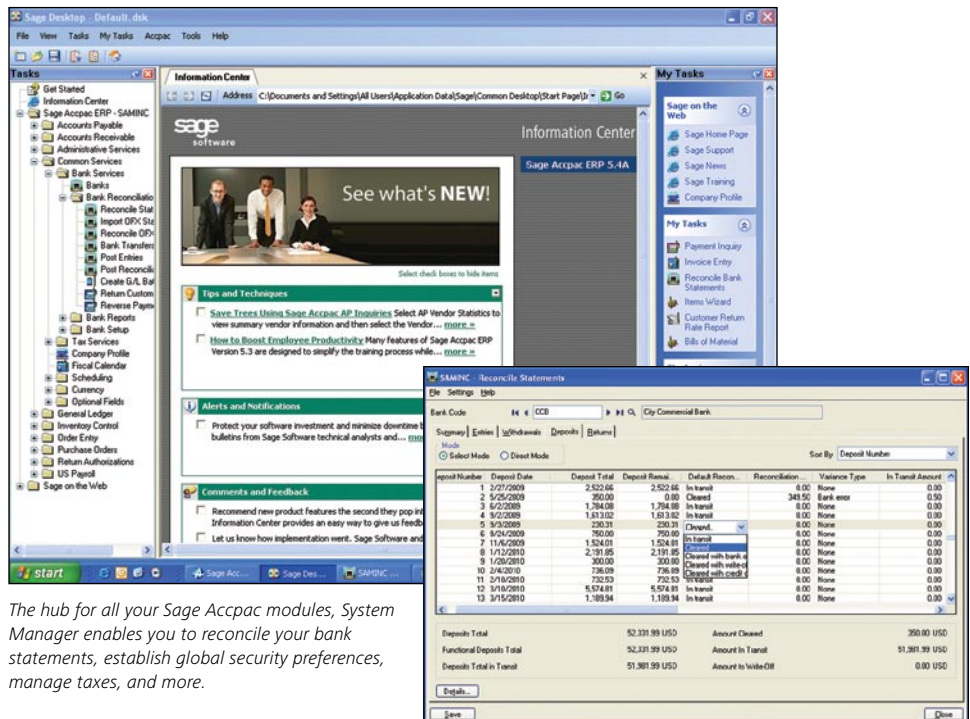
About Sage Software

Sage Software offers leading business management software and services that support the needs, challenges and dreams of more than 2.6 million customers in North America. Its parent company, The Sage Group plc (London: SGE.L), supports over 5 million customers worldwide. For more than 25 years, Sage Software has delivered easy-to-use, scalable, and customizable software for accounting, customer relationship management, human resources, time tracking, and the specialized needs of accounting practices and the construction, distribution, manufacturing, nonprofit, and real estate industries.

About Sage Accpac ERP

Sage Accpac ERP is an award-winning accounting system built on world-class architecture. Designed for companies of all sizes, Sage Accpac runs on your choice of database—providing the foundation for an integrated suite of end-to-end business management applications. Sage Accpac delivers high performance, advanced functionality, and unmatched freedom of choice.

Visit us at www.sageaccpac.com or call 800-873-7282 today for more information about Sage Accpac ERP.



The hub for all your Sage Accpac modules, System Manager enables you to reconcile your bank statements, establish global security preferences, manage taxes, and more.

System Manager

The Sage Accpac System Manager module controls access to all Sage Accpac ERP accounting modules and information. It is the hub from which all other modules operate and affects nearly everything you do in your Sage Accpac system—from establishing security to searching for a record within a file. System Manager includes effective tools that ensure data integrity and complete processing and security management, enabling users to work more productively. System Manager also allows Sage Accpac to run through a standard Web browser—without client software—centralizing IT management and lowering overall ownership costs. Additionally, System Manager provides employees, customers, and partners with secure anytime, anywhere access to Sage Accpac.

Features

- Take advantage of optional fields for extended visibility in lookups and reports throughout the application.
- Store credit card transactions in selected modules.
- Specify a tax reporting currency and automatically calculate taxes in source currency, functional currency, and the tax reporting currency. This feature is accessible from multiple modules.
- Comply with international tax requirements with full control over taxing of retainage.
- Use bank reconciliation tools for reconciling individual receipts, accessing reports, generating enhanced bank statements, specifying actions for individual OFX entries, adding comments to statements, and indicating tax information for transactions entered.
- Print checks for multiple banks and languages.
- Utilize numerous options for full control over the identifying details that get transferred to the General Ledger.

Process Server

The Sage Accpac Process Server module enables you to off-load transaction processing and reporting from an individual workstation onto other Microsoft Windows systems (process servers). Running on these systems, Process Server lets you send processor-intensive tasks to a computer (or a cluster of computers in high-volume environments) dedicated solely to providing processing services to client computers. In addition to providing



Sage Accpac

System and User Administration Modules

the efficiencies of centralized processing, Process Server immediately frees client workstations, reduces network traffic, and lets you schedule exactly when the process server will begin its task, maximizing computing resources.

iConnect

The Sage Accpac *iConnect* modules provide employees with anytime, anywhere access to functions of your Sage Accpac accounting system that you choose to remotely deploy. With access to a complete virtual office environment, employees can operate at peak efficiency.

iConnect delivers robust functionality to the entire organization, providing access to the most widely used elements of Sage Accpac over a Web browser. The following *iConnect* components are available to add on to your Sage Accpac system.

iConnect Server

At the core of *iConnect* is the *iConnect* Server, a robust, secure bridge between your internal Sage Accpac business systems and your employees. It serves as the foundation for Sage Accpac's family of *iConnect* modules and also provides a secure platform to implement flexible Web-based Java and ActiveX applications.

iConnect Self Service – Order Entry

iConnect Self Service – Order Entry enables salespeople to now have the convenience of placing orders through the Internet at any time of the day or night. Since these orders go directly to the Sage Accpac system's Order Entry module, there's no redundant data entry and orders can be processed immediately.

Features

- Gives your employees remote capabilities to enter orders, change pricing, and enter new shipments and ship-to locations.
- Allows employees to view and print order information, including customer unique pricing, order quantity, quantity shipped, and quantity outstanding.
- Supports individual customer pricing.
- Automatically assigns order numbers.
- Automatically calculates tax.
- Allows salespeople to change pricing.

iConnect Self Service – Order Inquiry

iConnect Self Service – Order Inquiry enables salespeople to view their customers' order information, price lists, and order status 24 hours a day, seven days a week. Remote salespeople will now have the information they need at their fingertips.

Features

- Allows salespeople to view order and invoice information.
- Allows remote entry of alternative ship-to locations.
- Allows remote printing of order acknowledgments, order confirmations, and invoices.

- Provides the date an order is to be filled.
- Provides the date of the last shipment and courier.
- Provides the order quantity, quantity shipped, and outstanding quantity for each item.

iConnect Self Service – Customer Account Inquiry

iConnect Self Service – Customer Account Inquiry allows salespeople and other remote employees to quickly and easily answer simple questions about account balances and payment information, request credit limit changes, and update vital account information, such as client address, phone number, and contact information.

Features

- Allows employees to view customer balances, statistics, and transaction history over the Web. This remote connection also lets your employees request credit limit changes and reprint invoices.
- Allows employees to view customer account information.
- Optionally allows employees to update customer account information.
- Displays account statistics and outstanding transactions.
- Lets employees request a credit limit change by e-mail.

iConnect Self Service – Purchase Orders Requisitions

iConnect Self Service – Purchase Orders Requisitions makes it possible for remote employees to enter purchase requisitions directly into your Sage Accpac system.

Features

- Empowers your employees to remotely enter, view, track, and print purchase order and requisition details. Managers can remotely view and approve purchase requisitions.
- Allows remote employees to enter purchase requisitions into Sage Accpac Purchase Orders.
- Enables employees to enter drop-ship locations specifying a specific address, inventory location, or customer address.
- Lets employees print requisition details as confirmation.
- Automatically assigns requisition numbers.

iConnect Self Service – Employee Inquiry

iConnect Self Service – Employee Inquiry empowers employees to view their confidential information, personal benefits, vacation days, and sick days, over the Web. It also optionally allows employees to update their personal information.