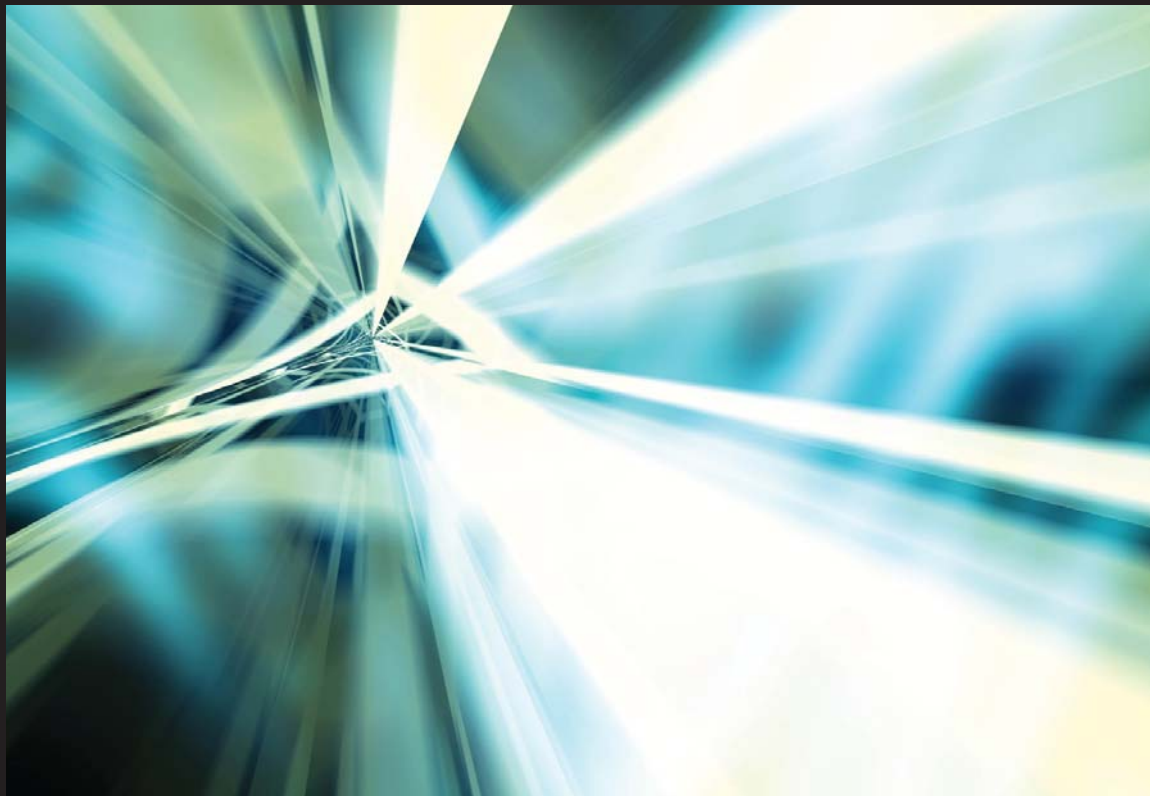




Peachtree
by Sage

QUANTUM



Peachtree by Sage – Quantum 2007:
Is It Right for Your Business?

sage
software

Table of Contents

- Peachtree by Sage – Quantum 2007 Product Overview 3**
- When is Peachtree Quantum the Right Choice for My Business? 3**
- When is Peachtree Quantum NOT the Right Choice for My Business? 3**
- Key Features and Benefits 4**
 - Exclusive Peachtree Quantum Features 4
 - Peachtree by Sage 2007 Features Included in Peachtree Quantum 4
- Peachtree Quantum Signature Care Program 5**
- Database Improvements 5**
 - Faster Data Access & Processing 5
 - Multi-User Capabilities 6
- Peachtree Quantum – A Fraction of the Cost Compared to Other Solutions 6**
- Industry-Specific Functionality 6**
 - Construction 6
 - Manufacturing and Distribution 6
 - Nonprofits 8
- Payroll Solutions 8**
 - Full-Service Payroll with Peachtree Payroll Service 8
 - In-House Payroll 8
 - Peachtree Direct Deposit 9
- System Requirements 10**
- Endnotes 11**

Peachtree by Sage – Quantum 2007 Product Overview

Peachtree by Sage – Quantum is the most comprehensive offering in the Peachtree by Sage 2007 product line. It combines all the features of Peachtree by Sage Premium Accounting 2007 and our industry-specific solutions, plus extensive performance and database improvements. Designed for growth-oriented small businesses, Peachtree Quantum provides a robust, high-performance accounting solution that supports up to 10 named users¹.

Peachtree Quantum is ideally suited for companies that are outgrowing the capabilities of Peachtree Complete Accounting or Peachtree Premium Accounting. Continuing with the Peachtree family of products assures a seamless transition to a more powerful accounting solution, while avoiding the high costs of implementation, training, and maintenance you incur with many mid-market applications.

When is Peachtree Quantum the Right Choice for My Business?

If you answer yes to any of the following questions, then Peachtree Quantum is the right choice for you:

- Is your company outgrowing Peachtree Complete Accounting or Peachtree Premium Accounting?
- Do you have 5 or more users that need access to your Peachtree software?
- Have you considered switching to a mid-market solution, but are concerned about the high costs of implementation, data conversion, training, and maintenance?
- Do you need more flexibility and control in setting up and maintaining user security?
- Are you experiencing lengthy save times for transactions?
- Are you experiencing lengthy load times for reports?
- Do you have large data requirements?

When is Peachtree Quantum NOT the Right Choice for My Business?

If you answer yes to one or more of the following questions, Peachtree Quantum may not be the right choice for your business. In this case, a mid-market Sage Software solution may be a more appropriate option to address your needs.

- Do you need more than 10 users to be able to access and use your accounting data at the same time?
- Do you require advanced inventory functionality such as:
 - Assemblies with serialized components?
 - Multiple inventory warehouses/locations?
 - Automated order entry and forecasting?
 - Lot tracking?
 - Manufacturing capabilities (MRP and advanced work order modules)?
- Do you require advanced job costing functionality such as:
 - Job shop data entry?
 - Jobs info entered into job tickets, automatically filters to modules?

- Do you require the ability to customize your accounting application by adding, modifying, hiding, renaming or reordering fields and functionality?
- Do you require advanced payroll functionality such as certified payroll and the ability to generate large payroll runs?
- Do you require reports to spans more than two fiscal years?
- Do you require integration with other systems and applications?
- Does your database size exceed 500MB?

Key Features and Benefits

Exclusive Peachtree Quantum Features:

- Offers significant performance improvements that make look-up lists and searches up to 64% faster.²
- Access nearly all reports in less than one second.²
- Designed to allow you to grow without having to convert your data or learn a new user interface.
- Designed to significantly reduce³ multi-user lockups and blocking.
- Includes all full-product upgrades and all maintenance updates during a 12-month period to always keep you on the most current release.⁴
- Includes 12 months of unlimited⁵ access to support via phone & e-mail, Monday-Friday from 8:30 AM – 8:30 PM eastern time.
- Designed to more effectively manage customers, vendors, and employees which allows for virtually unlimited database capacity.⁶
- Includes all features available in Peachtree Premium Accounting, plus all industry-specific product capabilities for Manufacturing, Construction, Distribution, and Nonprofits.
- Support for up to 10 local¹ and remote⁷ named users.
- Simplified user security setup based on customizable roles-based templates by job function, which significantly improves new user setup time.
- Increased performance of up to 41%² when saving transactions.
- Optimized batch posting.
- Access to a Peachtree Quantum Support Specialist for a higher level of customer service.
- Includes both the Peachtree Quantum 2007 Basic and Advanced Self-Study Guides to help you get the most out of your application.

Peachtree by Sage 2007 Features Included in Peachtree Quantum:

Peachtree Quantum includes all of the new features found in the core Peachtree 2007 solutions. The following list is a sample of the many 2007 features included in Peachtree Quantum.

- **Enhanced integration with Microsoft® Excel®** – Now customizing your Peachtree data in Excel is easier than ever! Peachtree 2007 provides more options when exporting data from Peachtree reports to Excel. You can export a new layout option to Excel that mirrors the layout and formatting of a

Peachtree report. Data exported from Peachtree not only includes the formulas for calculated values and data formatting, but also options to freeze panes and enable automatic column filtering.

- **Filter Reports Using Custom Fields** – Now you can filter standard and custom reports by custom fields, allowing you to run more meaningful reports. Not only can you store data that's unique to your business, but now you can use it in your reports.
- **Enhanced Technology** – The underlying framework that supports Peachtree 2007 includes a new database that accommodates more transactions with improved reliability and efficiency – to meet the needs of your growing business. The new database provides improvements when opening windows and saving transactions. Multi-user environments will experience a marked reduction in "lockups" requiring users to exit Peachtree to perform tasks like printing and entering transactions in prior periods.
- **Easy-Access to Lists** – At-a-glance find, view, drill down, print, and e-mail information and records easier and faster. Now you can view all of your key information at once using lists. Peachtree 2007 offers you the ability to sort and search on lists of customers & vendors, as well as transactions like invoices and payments. Simply click on an entry, or a list, and all of the pertinent information is displayed.
- **Print-n-Sign Tax Forms⁹** – There's no need to waste time and money trying to align your tax forms* for your printer, hoping all the data fields fit. Peachtree 2007 Print-n-Sign Tax Forms makes it easy because the form layout and all the data resides within Peachtree. Just click, print, and sign. It's that easy. (*Federal tax forms included are 941, 941b, 940 EZ and over 180 state forms. Requires subscription to the Peachtree Payroll Tax Update Service.)
- **Recurring Transactions w/ Year End Rollover** – Set up transactions once and do not worry about them, even those that continue beyond fiscal year end. Peachtree automatically remembers these transactions for you. Set how often and when these recurring transactions occur and Peachtree does the rest.

Peachtree Quantum Signature Care Program

The Peachtree Quantum Signature Care Program is a comprehensive support plan that includes the following benefits:

- 12 months of unlimited⁵ access to phone and e-mail support.
- 12 months of full product upgrades and all maintenance updates – to keep you on the most current release.⁴
- 24x7 access to the Peachtree Knowledge Center, our extensive online library of "tech tips" and frequently asked questions.
- Access to a Peachtree Quantum Support Specialist for a higher level of customer support.

Database Improvements

Faster Data Access & Processing

- Significant performance improvements that make information look-ups and searches up to 64% faster.²
- The ability to access nearly all reports in less than 1 second.²

- Designed to more effectively manage customers, vendors and employees, which allows for a virtually unlimited database capacity.⁶
- Increased performance of up to 41%² when saving transactions.

Multi-User Capabilities

- Support for up to 10 local¹ and remote⁷ named users.
- Designed to significantly reduce multi-user lockups and blocking.³
- Simplified user security setup based on customizable, roles-based templates by job function, which significantly improves new user setup time.

Peachtree Quantum – A Fraction of the Cost Compared to Other Solutions

The cost and complexity of implementing a mid-market application can be substantial. Software license fees for mid-market accounting applications range anywhere from \$1,000 to over \$10,000 per user. This does not include the consulting and training costs that are often necessary to fully implement a new system. The ratio of implementation to software license fees is typically between 1:1 and 2:1. After purchasing a \$10,000 mid-market accounting system, you could incur an additional \$10,000 to \$20,000 in implementation fees.

Industry-Specific Functionality

Peachtree Quantum 2007 also delivers all the powerful functionality found in the Peachtree Premium Accounting industry-specific solutions. Here is a sample of the industry-specific features included in Peachtree Quantum.

Construction

- Track Subcontractor Insurance
- Apply Labor Burden
- Progress Billing
- Track Retainage¹⁰
- Work in Progress
- Advanced Job Costing
- Operational Reports

Manufacturing and Distribution

Pricing Management Features

- Enhanced Item Pricing Levels
- Apply Quantity Pricing Discounts
- Item Price Changer

Inventory Management Features

- Indented Bill of Materials Report
- Order or Sell Using Vendor Part Numbers
- Track Item Detail
- Serialized Inventory Tracking
- Item Attribute Sets
- Auto-Creation of Purchase Orders based on Stocking Levels
- Buy and Sell in Multi-Quantity Units
- Multiple Costing Methods
- Integration with UPS®¹¹
- Stock Status by Location Report
- Item Sales by Customer and Purchase Order Number Report
- On-Hand Detail Report

Customer and Vendor Management Features

- Customer Management (A/R) Detail Report
- Create a Purchase Order from Sales Order
- Print Customer Balance on Invoices
- Customer Transaction History Report
- Store 20 customer "ship to" Addresses
- Vendor Management (A/P) Detail Report
- Credit Hold
- Display Customer Balance on Invoices
- Display Vendor Balance
- Copy Customer "Bill to" Address to "Ship to" Address
- Vendor Transaction History Report

Advanced Kitting and Assembly

- Advanced Indented Bill of Materials (BOM) Processing
- Work Tickets
- Assembly Planning Report
- Production Schedule Report
- Deficient Components List for Assemblies Report
- Component Pick List Report

Nonprofits

- Donor Grantor Summary List Report
- Statement of Revenues and Expenditures
- YTD Statement of Revenues and Expenditures
- Budgeted Statement of Revenues and Expenditures
- Combining Statement of Revenues and Expenditures
- Statement of Financial Position

Payroll Solutions

Full-Service Payroll with Peachtree Payroll Service¹²

If you prefer to have professionals process your payroll, Peachtree Payroll Service offers everything you expect from a full service provider! We'll reduce your risk of tax penalties and save you valuable time on payroll chores so you can focus on growing your business. This easy-to-use, full-service, online payroll solution offers you:

- Hassle-free, time-saving payroll
- Easy start-up
- Seamless integration with Peachtree
- Penalty-free guarantee¹³
- Flexible payroll entry
- New hire reporting
- Worker's Compensation calculations

In-House Payroll

In-house payroll virtually automates your payroll processing while providing complete control, easy setup, and time saving services. Best of all, the tools you need to run your payroll are already in Peachtree.¹⁴ In-house payroll allows you to enter employee wages and deductions, track jobs, process federal and state payroll taxes, print payroll checks and W-2s, and run payroll reports – all from your desktop!

Peachtree Payroll Tax Update Service¹⁵

Peachtree Payroll Tax Update Service is an annual subscription providing you with timely and accurate updates. Any time there is a federal, state, or key local tax change enacted, you will receive the updated changes for your Peachtree accounting program. In addition, you'll also receive updates when changes are made to the formats of the various tax-reporting forms supported in your Peachtree software.

Print-n-Sign Tax Forms⁹

Prepare your tax filings in less time by using signature-ready tax forms. Peachtree 2007 compiles the payroll data for your 940, 941/941 Schedule B, 943, 945, W-2, and W-3 forms and transfers your data directly to your federal and state filings, so you can print on blank paper and reduce the hassles of aligning forms.

Peachtree 2007 includes 180+ state forms for all 50 states. All forms, state and federal, can be printed onto blank paper which can save you money from having to purchase pre-printed payroll tax forms. Just review it, print it, sign it, and mail it.

If you find a field that needs to be changed during review, you can make the change right on the form and the fields recalculate for you. This is another way we save you time when filing.

Peachtree Direct Deposit¹⁶

Provide your employees the convenience of having their pay deposited directly into accounts of their choice. Enjoy hassle-free paydays with more time for job-critical tasks. Run payroll as you normally would in your Peachtree software and, with a few clicks, you can designate employees as direct deposit or regular paycheck—all within the same payroll run. It's simple with Peachtree Direct Deposit—the only direct deposit service that seamlessly integrates with Peachtree.

System Requirements

IMPORTANT NOTE FOR CUSTOMERS UPGRADING FROM PEACHTREE 2006 OR EARLIER:

Certain features have changed or are no longer available. Peachtree Today has been removed. In Peachtree Complete or higher it has been replaced with the Business Status Center. The forms designer can no longer be used to customize payroll tax form templates. Several aspects of the system requirements have been updated. It is recommended that you carefully review the system requirements for compatibility and acceptance prior to upgrading.

Component	Requirement
	Customer registration and acceptance of Sage Software License Agreement for Peachtree Accounting Software Products is required.
Operating System	Windows® 2000 sp3/XP sp2
Processor	<ul style="list-style-type: none"> • 2.8 GHz Intel Pentium® 4 (or equivalent) recommended • 1.8 GHz Intel Pentium 4 (or equivalent) minimum
Memory	<ul style="list-style-type: none"> • 1 GB of RAM recommended • 512 MB of RAM minimum
Server	<ul style="list-style-type: none"> • 3.4 GHz Intel Pentium 4 (or equivalent) • 2 GB of RAM
Monitor	At least high color (16 bit) SVGA video; Supports 800x600 resolution with small fonts. Optimized for 1024x768
Other	<ul style="list-style-type: none"> • 2x CD-ROM Drive • Mouse or compatible pointing device • 450 MB available hard disk space for installation • Microsoft® .NET Framework CLR 1.1 (provided on CD. Requires an additional 150 MB) • Additional 55MB available hard disk space is required to install the Guided Tour • In-product demos require Macromedia® Flash™ Player • Internet Explorer 6.0 required (6.0 provided on CD. Requires an additional 70 MB available hard disk space to install) • Adobe® Reader® 7.0 required and provided on CD. (Requires an additional 90 MB available hard disk space to install) • All online features/services require Internet access with at least a 56 Kbps modem.
Printers	Printers supported by Microsoft Windows 2000/XP
Multi-user	Multi-user mode is optimized for Windows 2000 Server or Windows Server 2003 client-server networks, and Windows 2000/XP peer-to-peer networks. A maximum of 10 licensed named users are allowed. A named user account is granted a license when selected in the user maintenance screen.
Terminal Services	Windows 2000 or 2003 server along with Remote Desktop Connection and Remote Desktop Web Connection client is required to run in a Windows Terminal Services environment*. No more than 10 named users.
Integration Requirements	<ul style="list-style-type: none"> • Integration with Excel, Outlook® and Word requires Microsoft Excel, Outlook and Word 2000, 2002 or 2003. Refer to Microsoft Excel, Microsoft Outlook and Microsoft Word for hardware and memory system requirements • Outlook Sync supported in Exchange 5.5 and higher
Crystal Reports® for Peachtree	<ul style="list-style-type: none"> • Peachtree by Sage - Quantum 2007 must be installed • Additional 235 MB of available disk space is required to install • Microsoft Windows Home Edition not supported

*Terminal Server requires additional memory when more than one user is running under Windows Terminal Services. An additional 21MB RAM is recommended for each additional user.

Note: Support packs and patches for NetWare 6.0 will be made until November 1, 2004, and Technical Support will be available until November 1, 2005, after which time NetWare 6.0 will become obsolete.

Endnotes

- 1 Subject to terms of the End User License Agreement. A maximum of 10 licensed named users are allowed. Only the first 10 named users selected in the user maintenance screen are considered licensed named users.
- 2 Performance results are based on recommended system requirements for Peachtree Premium Accounting 2006. Results may vary based on configuration, size and content of data file, system and network traffic. For information on testing environment refer to www.peachtreequantum.com/test.
- 3 Multi-user performance gains for 5 users or less are realized in the Peachtree 2007 products with the exception of Peachtree First Accounting and Peachtree Pro Accounting.
- 4 The Peachtree Quantum Signature Care Plan allows you to receive all upgrades that are released within 12 months of your purchase. Subscription is not required for continued access to product updates. Your Peachtree Quantum Signature Care Plan will be automatically renewed each year on the anniversary date of your purchase unless you terminate your agreement prior to that date.
- 5 Sage Software reserves the right to limit each support call to 1 hour or 1 incident. Hours of operation are Monday-Friday from 8:30 AM – 8:30 PM eastern time, excluding occasional exceptions for observed holidays, company events, and extreme conditions beyond our control.
- 6 Peachtree does not impose a hard limit on database capacity, however, individual performance will vary depending on actual number of transactions, database size and number of concurrent users. Data Management efficiencies are also realized in the Peachtree 2007 products.
- 7 Remote access is available via Terminal Services and requires Microsoft Windows Server 2003, 2000 Server, and XP Pro licenses. For multiple remote users, a Windows 2000 Terminal Services Client Access license is required for each user.
- 8 See System Requirements.
- 9 Federal tax forms included are 940, 941, 941b, 943, 945, W-2, W-3 and over 180 state forms. Requires subscription to the Peachtree Payroll Tax Update Service. Additional fees required. Available with Peachtree 2007.
- 10 Retainage available only in companies using an accrual based accounting method.
- 11 UPS functionality is subject to UPS terms and conditions. Internet access required.
- 12 Subject to approval. Additional fees, Internet access and credit card required. Not available with Peachtree First Accounting.
- 13 Sage Software guarantees accurate, timely deposits and filings with federal, state and local agencies or we'll pay the resulting payroll tax penalties for you! We back our promise as long as the information you provide us is on time, complete, and accurate and your account is properly funded.
- 14 File-able forms and automatically updated tax tables require an additional fee.
- 15 Additional fees apply. Year end payroll tax forms (such as W-2s and 1099s) are updated at the end of the calendar year. Your subscription includes all the latest federal law changes plus coverage of two states of your choice. The 2007 Peachtree Payroll Tax Update Service is available to registered users of the most current supported versions of Peachtree Software.
- 16 Subject to approval. Additional fees, Internet access and credit card required.



Your business in mind.

1505 Pavilion Place • Norcross, GA 30093

www.peachtreequantum.com